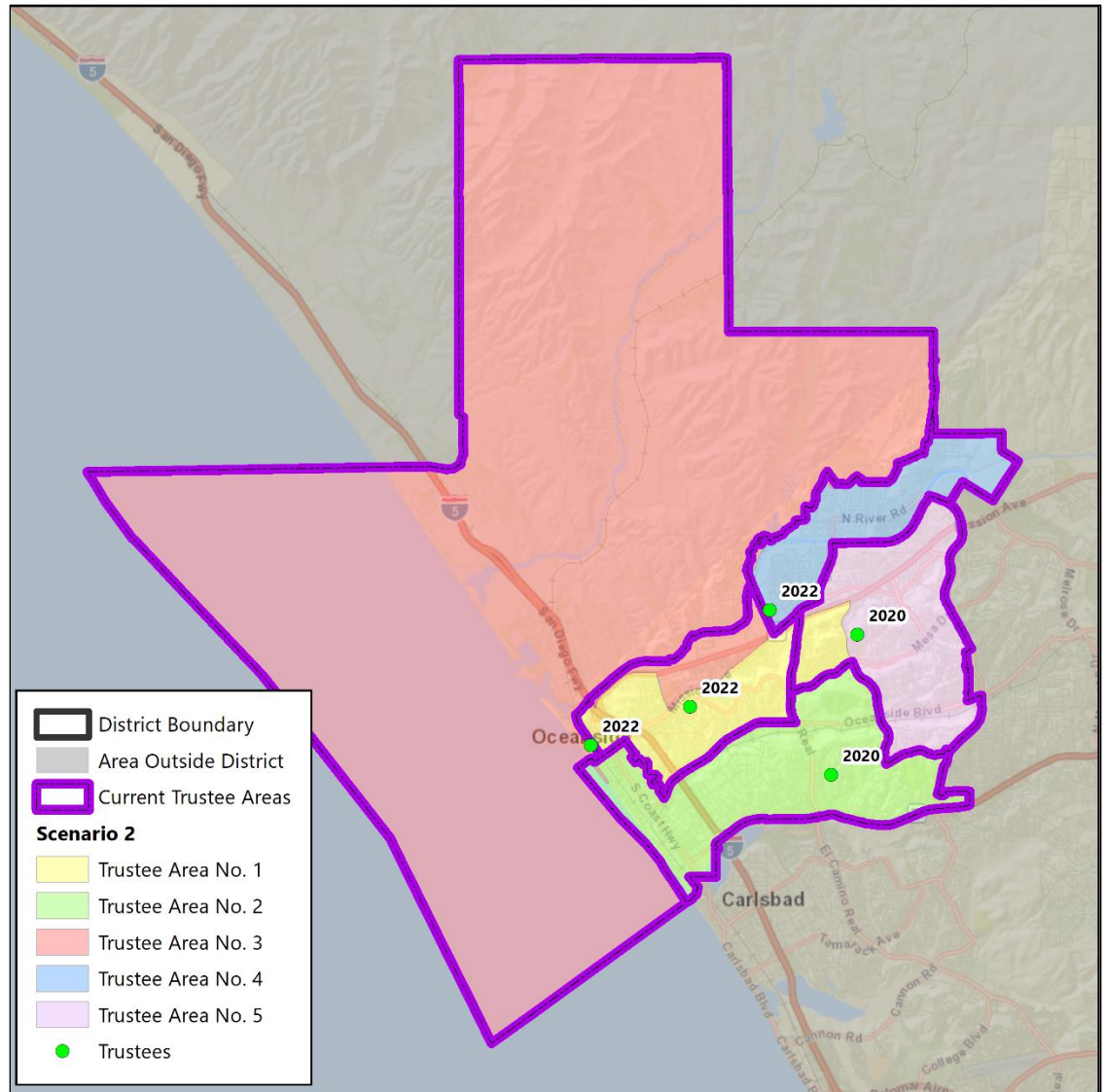


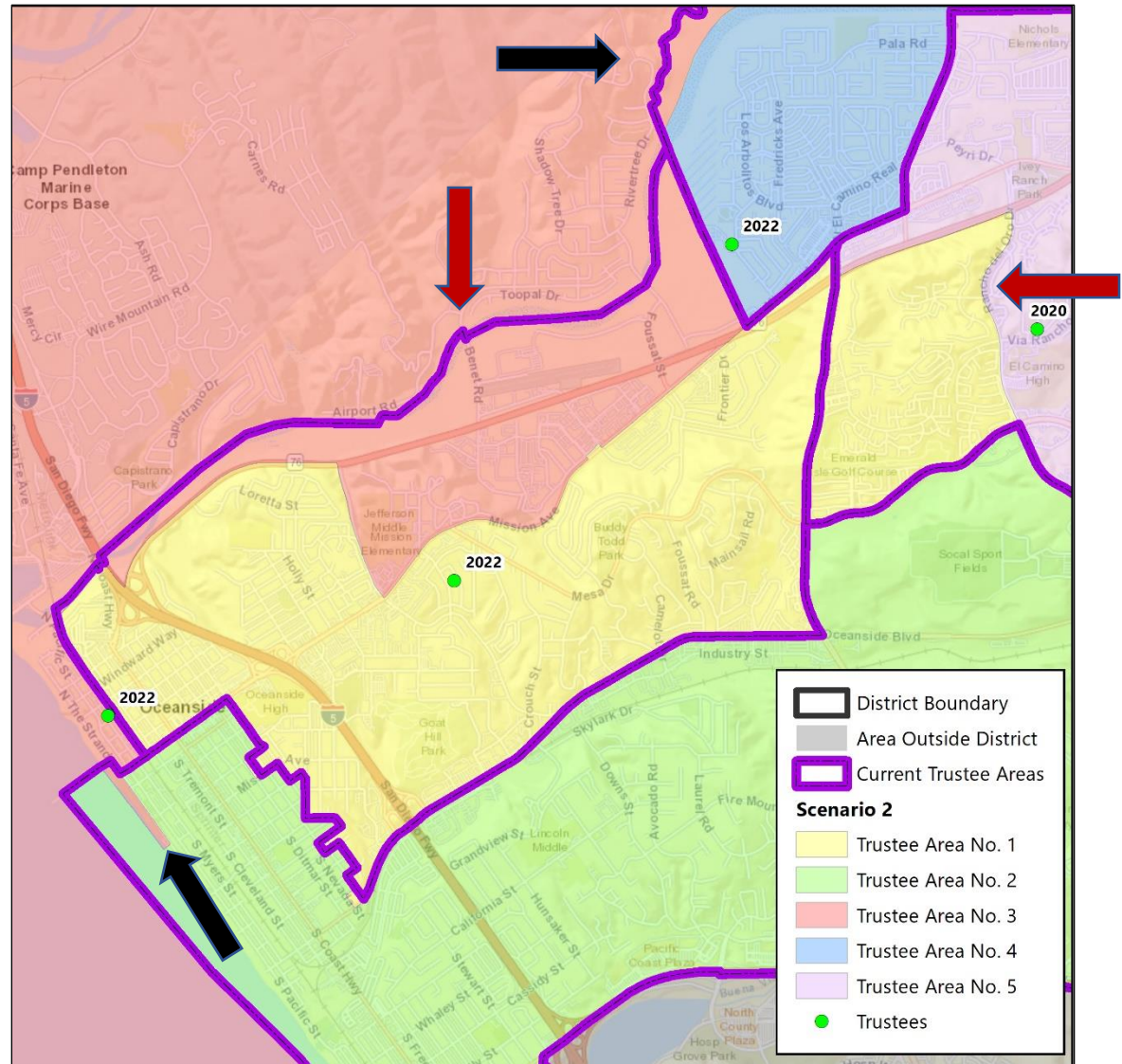
# ▶ CONCEPTUAL TRUSTEE AREAS SCENARIO 2



## ▶ CONCEPTUAL TRUSTEE AREAS

### SCENARIO 2

- Scenario 1 was drawn in consideration of balancing population growth and following roads
- Note: Red arrows show proposed change to trustee areas. Black arrows show changes due to merged census blocks
- Note: Areas of District not shown on this map do not have proposed boundary changes.



► **DEMOGRAPHICS**  
**SCENARIO 2**

<b>Total Population:</b>	<b>136,662</b>	<b>Ideal Trustee Area Size:</b>	<b>27,332</b>	<b>Variance:</b>	<b>8.7%</b>
--------------------------	----------------	---------------------------------	---------------	------------------	-------------

<b>TRUSTEE AREA</b>	<b>Trustee Area 1</b>		<b>Trustee Area 2</b>		<b>Trustee Area 3</b>		<b>Trustee Area 4</b>		<b>Trustee Area 5</b>	
<b>TP* vs. CVAP**</b>	<b>TP</b>	<b>CVAP</b>	<b>TP</b>	<b>CVAP</b>	<b>TP</b>	<b>CVAP</b>	<b>TP</b>	<b>CVAP</b>	<b>TP</b>	<b>CVAP</b>
Population	28,326	<b>19,283</b>	27,384	<b>20,854</b>	25,959	<b>17,666</b>	27,805	<b>18,228</b>	27,188	<b>18,324</b>
Population Variance	3.6%	<b>N/A</b>	0.2%	<b>N/A</b>	-5.0%	<b>N/A</b>	1.7%	<b>N/A</b>	-0.5%	<b>N/A</b>
Hispanic/Latino	47.8%	<b>36.2%</b>	24.2%	<b>19.7%</b>	30.0%	<b>23.5%</b>	52.0%	<b>41.2%</b>	35.2%	<b>27.9%</b>
White	38.2%	<b>48.4%</b>	61.3%	<b>69.7%</b>	49.5%	<b>57.8%</b>	27.1%	<b>40.3%</b>	40.9%	<b>52.3%</b>
Black/African American	3.9%	<b>7.5%</b>	2.6%	<b>1.9%</b>	6.3%	<b>7.9%</b>	5.2%	<b>6.5%</b>	4.7%	<b>5.8%</b>
American Indian/Alaska Native	0.3%	<b>0.0%</b>	0.3%	<b>1.9%</b>	0.5%	<b>0.5%</b>	0.3%	<b>0.2%</b>	0.3%	<b>0.2%</b>
Asian	4.1%	<b>3.7%</b>	4.5%	<b>3.5%</b>	6.0%	<b>6.2%</b>	8.0%	<b>7.9%</b>	10.6%	<b>9.0%</b>
Native Hawaiian/Other Pacific Islander	0.9%	<b>1.4%</b>	0.6%	<b>0.0%</b>	1.0%	<b>0.6%</b>	1.9%	<b>0.9%</b>	1.3%	<b>1.1%</b>
Other	0.6%	<b>0.0%</b>	0.6%	<b>0.0%</b>	0.6%	<b>0.0%</b>	0.6%	<b>0.0%</b>	0.6%	<b>0.0%</b>
Two or More Races	4.2%	<b>2.9%</b>	5.9%	<b>3.4%</b>	6.1%	<b>3.5%</b>	5.0%	<b>3.0%</b>	6.4%	<b>3.7%</b>